

Revised March 15, 2007

Example Scope

Note: all electronic Scopes of Work submitted to the Regional Working Group for funding consideration shall be in either MSWord or RTF format. PDFs are not acceptable.

Klopp Track at Lower Matecumbe Key

Invasive Exotic Plant Removal
Working Group
Florida Keys Invasive Exotic Plant Working Group
FY 07-08

Site Manager
John Smith, Park Manager
Lignumvitae Key State Botanical Site
111 Tropical Blvd.
Islamorada, FL 33036
Phone: (305) 222-2222
Fax: (305) 222-2223
Cell: (305) 222-2222
E-Mail: jsmith@dep.state.fl.us

Project Goals

This project will control Lead tree (*Leuceana leucocephala*), Australian pine (*Casuarina* spp.), Brazilian pepper (*Schinus terebinthifolius*), and Bowstring hemp (*Sansevieria lyacanthoides*) found within the Klopp Track as described below.

Revised March 15, 2007

Project Location

The Klopp track, managed by Lignumvitae Key State Botanical Site, is located on lower Matecumbe Key, bay side, at approximately mile marker 77 on U.S. Route One. Lignumvitae Key State Botanical Site consists of approximately 10,560 acres. The project site runs parallel to U.S. Route One and is located between power poles 863 and 869, a distance of 4/10ths of a mile (please see map A).

Project Description

The Klopp Track is a 23.3 acre site consisting of rockland hammock and marine tidal swamp. Areas of exotic vegetation are found throughout the 23.3 acre site but are primarily and most extensively found in the following areas (Figure 1&2)

- The eastern side of the site around the canal area. Exotic plant coverage is estimated at 60%
- On the northern side in the transition zone between rockland hammock and marine tidal swamp. Exotic plant coverage is estimated at 5%.
- On the southern side bordering the bike path and U.S. Route One. Exotic plant coverage is estimated at 70% in a 30 yard wide area 4/10ths of a mile long.
- On the western side bordering the tennis courts. Exotic plant coverage is estimated at 70% in a 15 yard wide area 150 yards long.

Work Specifications

Low volume basal herbicide applications with Garlon 4 herbicide in JLB Oil Plus Improved (or equivalent vegetable oil carrier) shall be used to treat Australian pine, lead tree, and Brazilian pepper. A red dye will be used to make identification of treated stems easier. Basal applications will be as follows: each treated plant application will begin at a height not less than 6 times the plant's basal diameter, but not exceeding 18 inches. Herbicide will be applied according to label rates and requirements using a low pressure spray to minimize spatter, drift, and non-target damage. Vegetation will be left to decompose on site.

Bowstring hemp will be treated by foliar application of Roundup Pro after the tops of plants are cut off with a By Pass Type Pruner.

The area bordering the bike path and US One for 4/10 mile will be controlled by felling trees and treating the cut stumps with Garlon 4 . Stumps will be left at or below grade. Felled vegetation will be burned on site. Seedlings may be pulled by hand and will be left hanging on other vegetation to reduce possibility of resprouting.

Revised March 15, 2007

Work scheduling will be closely coordinated to avoid conflicts with user groups. Since there are children at the site almost five days per week, and visitation does not end until May 8, we are requesting that the contractor awarded the contract do the following:

- Begin treatment at the beginning of May, starting in the southeast corner and avoiding Osprey Trail until after May 8.
- Flag off areas where contractors are working to prevent the public from entering during treatment.
- Drive slow and be extremely cautious when driving on the property.

All proposed access, including vehicle types, must be approved by staff. All treated vegetation will be left in place. All herbicides will be poured and mixed over a containment device to avoid ground contamination.

The site manager will flag known populations of endangered plants such as couplet fern.

Other Requirements and Provisions

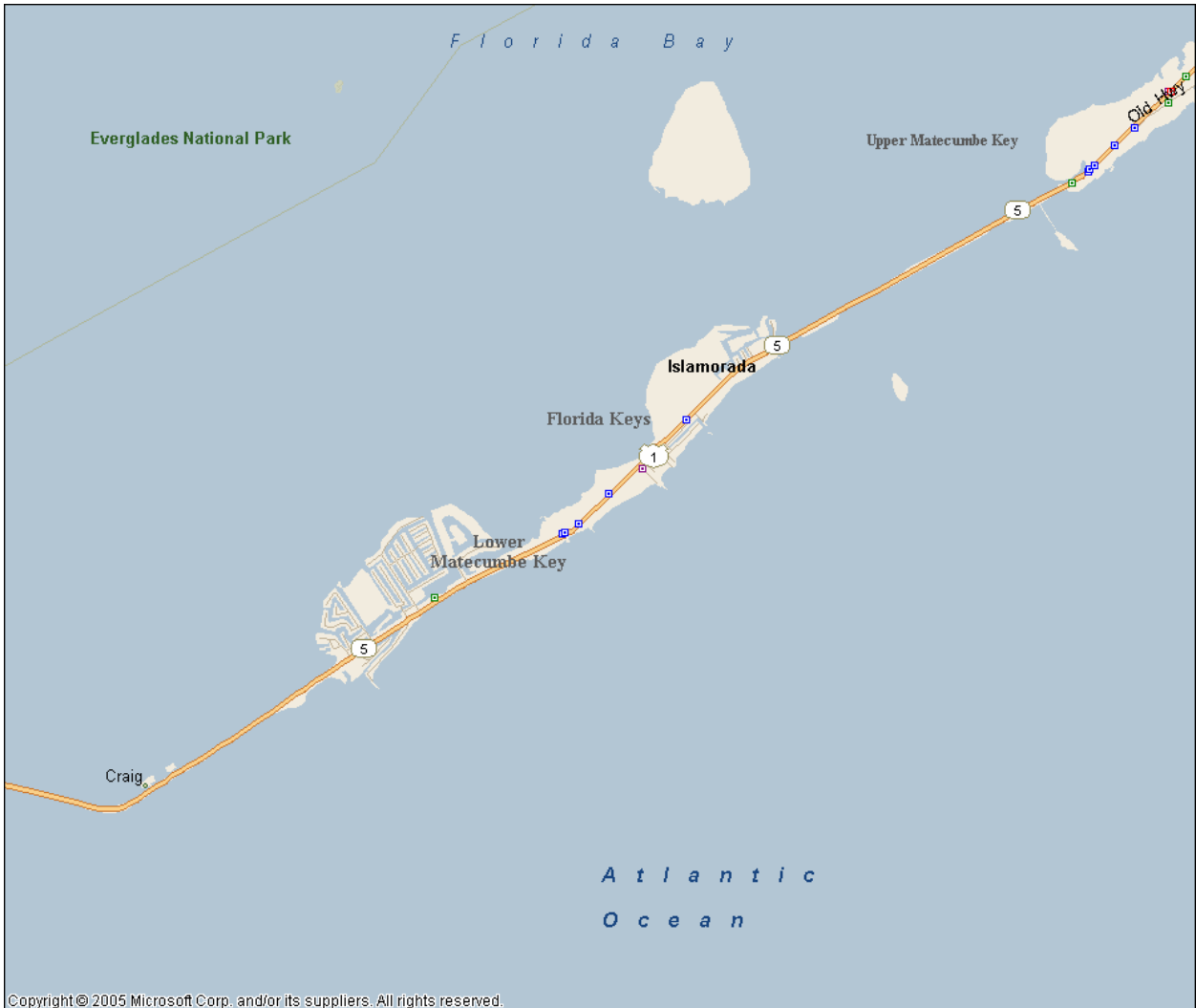
Several species of threatened and endangered species are found in the Klopp Tract. Every effort needs to be made to protect these populations. The Site Manager will notify the contractor of known location and review identification characteristics prior to work beginning on site.

Project Time Frame

Treatment will begin after March 24, 2007 to avoid turkey season.

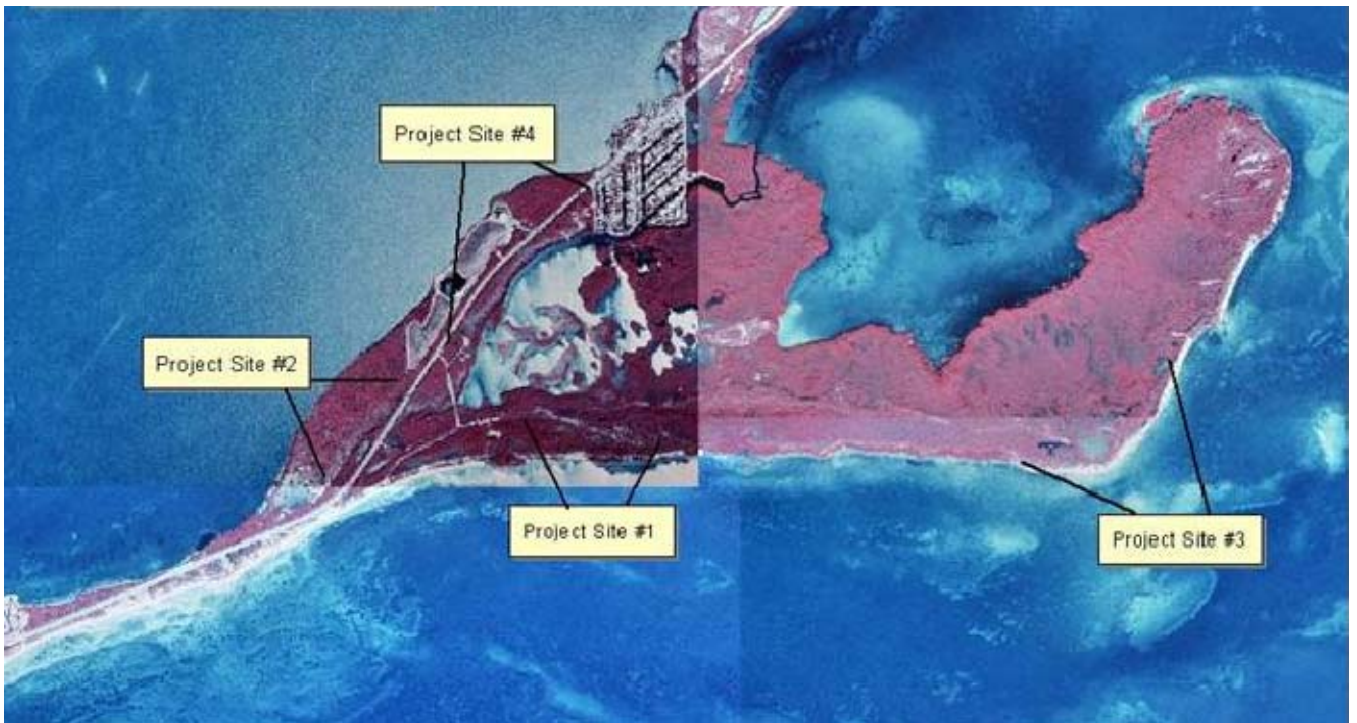
Revised March 15, 2007

Example Map A.



Revised March 15, 2007

Example Figure 1.



Revised March 15, 2007

Example Figure 2.

